



We love that you are rocking JLab!
We take pride in our products and fully stand behind them.

JLAB
EPIIC
MOUSE



YOUR WARRANTY

All warranty claims are subject to JLab authorization and at our sole discretion. Retain your proof of purchase to ensure warranty coverage.



CONTACT US

Reach out to us at support@jlab.com or visit jlab.com/contact

REGISTER TODAY

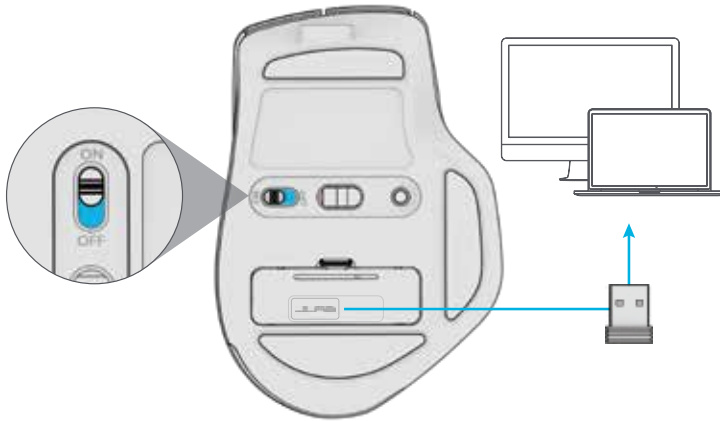
jlab.com/register

Product updates | How-to tips
FAQs & more

1 SETUP

2.4 Connect

Plug in the USB dongle to computer and turn on. The Epic Mouse will auto connect to device.



2 Bluetooth Connect

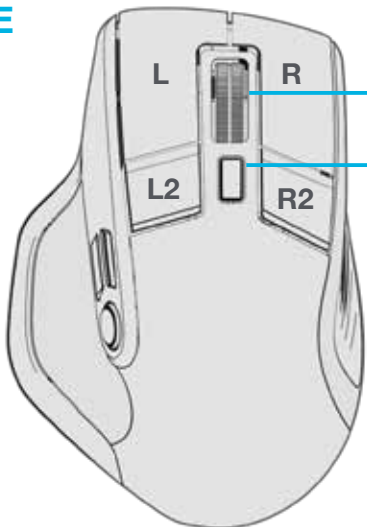
Quick Press to toggle between 2.4, 1, and 2. Then **Press and hold** to enter Pairing Mode. Select "JLab Epic Mouse" in device settings



Have a JLab Epic or JBuds Keyboard?

Scan the QR code to learn how to pair both your devices with just one dongle.

INTERFACE



Scroll + Middle Button

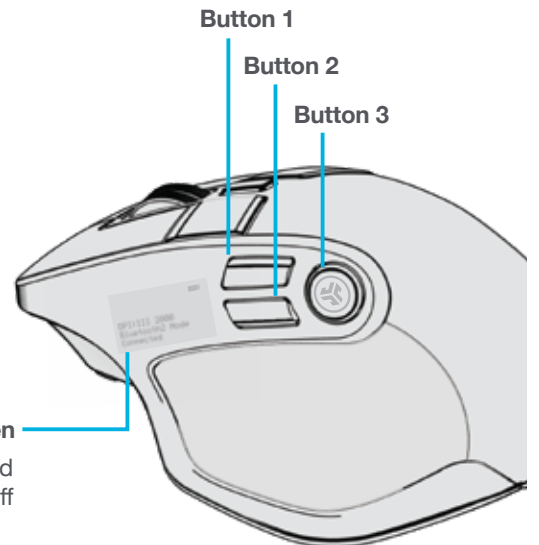
DPI Button

Quick Press:
Toggle press mouse sensitivity (1200, 1600, 2000, 2400)

Press and hold:
Button customization

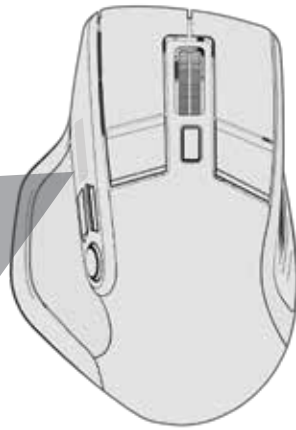
OLED Screen

Press and hold DPI Button and Button 3 to toggle screen on or off



CHARGING

Connect the Epic Mouse to computer or USB 5V 1A (or less) to charge.



battery life indicator ▼

DPI:III 2000
Bluetooth2 Mode
Connected

CUSTOMIZATION

Download the JLab App (for Mac and PC) to fully customize the Epic Mouse at: [JLAB.COM/SOFTWARE](https://www.jlab.com/software)



(2.4 dongle needs to be plugged in for customizing software)



[Shop products](#) | [Product alerts](#) | [Burn-in your headphones](#)

JLab Store + Burn-in Tool

