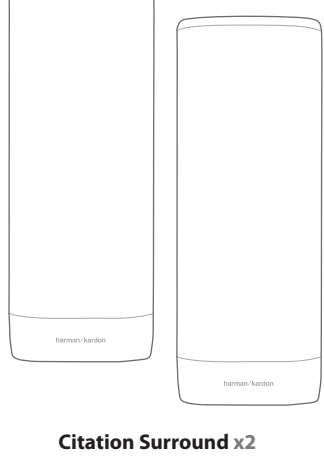
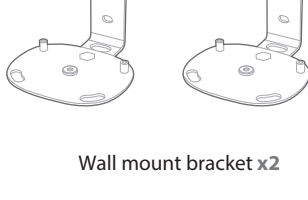


CITATION SURROUND

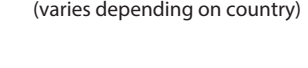
1 PRODUCT TOUR



Citation Surround x2

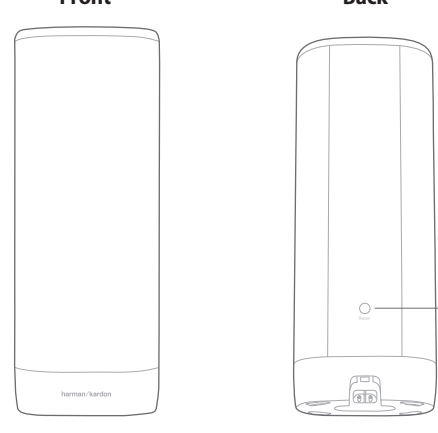


Wall mount bracket x2

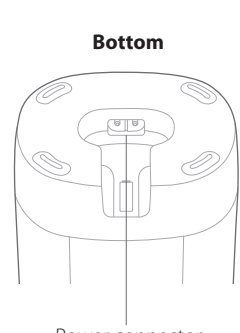


Regional power cord x2 (varies depending on country)

LED Indicator Status (for pairing)	LED Behavior
Enter into pairing mode	● Flashing
Wireless connected with Citation Bar	● 10 sec → ○ Off
Out of range/Lost wireless connection	● Flashing

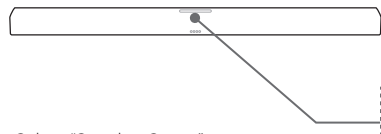
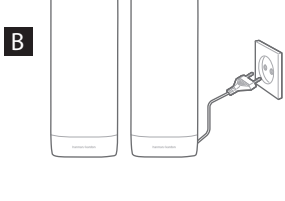
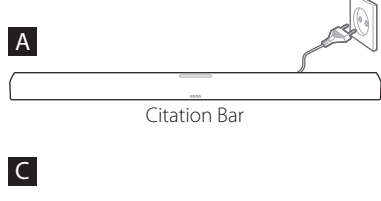


>5s
Reset

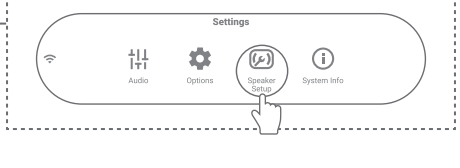


Power connector

2 GET STARTED

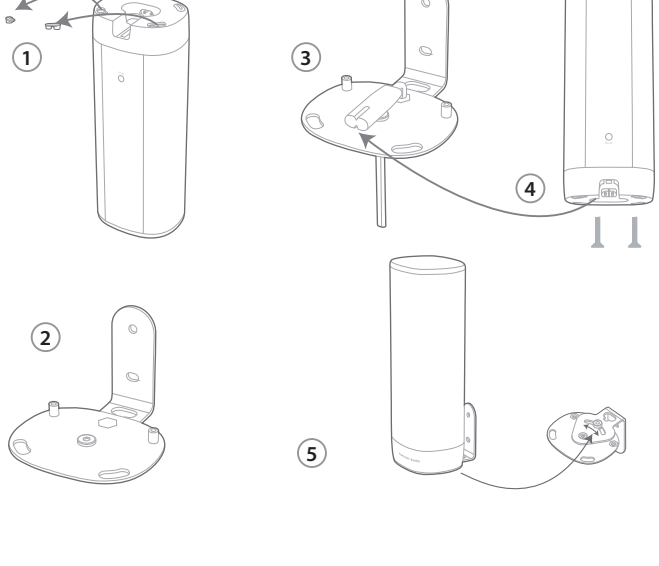


Select "Speaker Setup", follow on-screen instructions.



3 WALL MOUNT

- Step 1:** Remove the rubber feet from the bottom of the speaker.
- Step 2:** Mount the wall bracket in the wall using screws.
- Step 3:** Feed the power cord upward through the wall mount and connect to the power connector.
- Step 4:** Place the speaker in the wall mount with the supplied screws on the bottom.
- Step 5:** Use the nut at bottom of wall mount bracket to angle the speaker and tighten.



4 OWNER'S MANUAL

Download the full Owner's Manual from harmankardon.com

Téléchargez le mode d'emploi complet sur harmankardon.com

Descárgate el Manual de usuario completo en: harmankardon.com

Laden Sie die vollständige Bedienungsanleitung von harmankardon.com

Scarica il manuale dell'utente integrale da harmankardon.com

Download de complete gebruikershandleiding van harmankardon.com

Last ned hele brukerhåndboken fra harmankardon.com

Ladda ner hela bruksanvisningen från harmankardon.com

Hent hele bruksanvisningen fra harmankardon.com

『Owner's Manual』 (取扱説明書) を harmankardon.com からダウンロードしてください

harmankardon.com 에서 사용자 매뉴얼 전체를 다운로드하십시오

Unduh Buku Petunjuk Pemilik yang lengkap dari harmankardon.com/wireless

5 SPECIFICATION

EN

- Model Name: CITATION SURROUND
- Signal-to-noise ratio: >80dB
- Output power: 2x50W RMS
- Power Supply: 100-240V ~ 50/60Hz
- Power consumption in sleep mode: <2.0Watts
- 5G WISA transmitter power: <14dBm
- 5G WISA modulation: OFDM, BPSK, QPSK, 16QAM
- 5G WISA transmitter frequency range: 5.15 - 5.35GHz, 5.470 - 5.725GHz, 5.725 - 5.825GHz
- Dimension (W x H x D): 105 x 273 x 86mm (4" x 10.7" x 3.3")
- Weight: 1.29kg (2.84 lb)

- Packaging Dimension (W x H x D): 235 x 383 x 150mm (10" x 15" x 6")
- Packaging Weight (Gross): 3.57kg (7.87 lb)

Note: This product is designed to be instantly on and ready to receive signal from WISA Tx Unit at a moment's notice, wireless connection must remain active at all times to ensure proper operation.

The product is in compliance with the European Union energy legislation. The product will enter into sleep mode (networked standby) after 20 minutes without operation, after which it can be re-activated via wireless.

This device complies with Part 15 of the FCC rules and Industry Canada license-exempt RSS standard(s). Operation is subject to the following two conditions: (1) this device may not cause harmful interference, and (2) this device must accept any interference received, including interference that may cause undesired operation. CAN ICES-3 (B) / NMB-3 (B).

IC Caution:

User should also be advised that:

- (i) the device for function in the band 5150-5250 MHz is only for indoor use to reduce the potential for harmful interference to co-channel mobile satellite systems;
- (ii) the maximum antenna gain permitted for devices in the bands 5250 - 5350 MHz and 5470 - 5725 MHz shall comply with the e.i.r.p. limit; and
- (iii) the maximum antenna gain permitted for devices in the band 5725 - 5825 MHz shall comply with the e.i.r.p. limits specified for point-to-point and non point-to-point operation as appropriate.

(iv) Users should also be advised that high-power radars are allocated as primary users (i.e. priority users) of the bands 5250 - 5350 MHz and 5650 - 5850 MHz and that their radars could cause interference and/or damage to LE-LAN devices.

Les utilisateurs devraient aussi être avisés que

- (i) les dispositifs fonctionnant dans la bande 5150-5250 MHz sont uniquement pour une utilisation à l'intérieur afin de réduire les risques de brouillage préjudiciable aux systèmes de satellites mobiles utilisant les mêmes canaux;
- (ii) le gain maximal d'antenne permis pour les dispositifs utilisant les bandes 5 250-5 350 MHz et 5 470-5 725 MHz doit se conformer à la limite de p.i.r.e.;
- (iii) le gain maximal d'antenne permis (pour les dispositifs utilisant la bande 5 725-5 825 MHz) doit se conformer à la limite de p.i.r.e. spécifiée pour l'exploitation point à point et non point à point, selon le cas. De plus, les utilisateurs de radars de haute puissance sont désignés utilisateurs prioritaires (c.-à-d., qu'ils ont la priorité) pour les bandes 5 250-5 350 MHz et 5 650-5 850 MHz et que ces radars pourraient causer du brouillage et/ou des dommages aux dispositifs LAN-EL.

Warning: Changes or modifications to this unit not expressly approved by the party responsible for compliance could void the user's authority to operate the equipment.

NOTE: This equipment has been tested and found to comply with the limits for a Class B digital device, pursuant to Part 15 of the FCC Rules. These limits are designed to provide reasonable protection against harmful interference in a residential installation. This equipment generates, uses and can radiate radio frequency energy and, if not installed and used in accordance with the instructions, may cause harmful interference to radio communications.

However, there is no guarantee that interference will not occur in a particular installation. If this equipment does cause harmful interference to radio or television reception, which can be determined by turning the equipment off and on, the user is encouraged to try to correct the interference by one or more of the following measures:

- Reorient or relocate the receiving antenna.
- Increase the separation between the equipment and receiver.
- Connect the equipment into an outlet on a circuit different from that to which the receiver is connected.
- Consult the dealer or an experienced radio/TV technician for help.

High power radars are allocated as primary users of the 5.25 to 5.35 GHz and 5.65 to 5.85 GHz bands. These radar stations can cause interference with and/or damage to this device. No configuration controls are provided for this wireless equipment allowing any change in the frequency of operations outside the FCC grant of authorization for US operation according to Part 15.407 of the FCC rules.

FCC/IC Radiation Exposure Statement:

This equipment complies with FCC/IC RSS-102 radiation exposure limits set forth for an uncontrolled environment. This equipment should be installed and operated with minimum distance 20cm between the radiator and your body.

Cet équipement est conforme aux limites d'exposition aux radiations FCC/ IC CNR-102 établies pour un environnement non contrôlé. Cet équipement doit être installé et utilisé avec une distance minimale de 20 cm entre le radiateur et votre corps.

해당 무선설비는 전파혼신가능성이 있으므로 인명안전과 관련된 서비스는 할 수 없습니다.

Use Restriction: This device is restricted to indoor use when operating in the 5150 to 5350 MHz frequency range in following countries:

BE	EL	LT	PT	Belgium (BE), Greece (EL), Lithuania (LT), Portugal (PT), Bulgaria (BG), Spain (ES), Luxembourg (LU), Romania (RO), Czech Republic (CZ), France (FR), Hungary (HU), Slovenia (SI), Denmark (DK), Croatia (HR), Malta (MT), Slovakia (SK), Germany (DE), Italy (IT), Netherlands (NL), Finland (FI), Estonia (EE), Cyprus (CY), Austria (AT), Sweden (SE), Ireland (IE), Latvia (LV), Poland (PL) and United Kingdom (UK). This product contains open source software licensed under GPL. For a list of open source software and other relevant information, please download the Harman Kardon Controller app available on the App Store or Google Play. For your convenience, the source code and relevant build instruction are also available at http://www.harmankardon.com/opensource.html . Please feel free to contact us at: Harman Deutschland GmbH ATT: Open Source, Gregor Krapf-Gunther Parking 3 85748 Garching bei Munchen Germany or OpenSourceSupport@Harman.com if you have additional question regarding the open source software in the product.
BG	ES	LU	RO	
CZ	FR	HU	SI	
DK	HR	MT	SK	
DE	IT	NL	FI	
EE	CY	AT	SE	
IE	LV	PL	UK	

FR

1 DÉCOUVERTE DU PRODUIT

- Citation Surround x2
- 2 supports de montage mural
- 2 câbles d'alimentation aux normes locales (varie en fonction du pays)

Avant

Retour

Réinitialiser

Bas

Connecteur d'alimentation

Voyant d'état à LED (pour appairage)	Comportement du voyant à LED
Entrer en mode appairage	● Clignotant
Connexion sans fil avec Bar	● 10 sec → ○ Arrêt
Hors de portée/Connexion sans fil perdue	● Clignotant

2 PRISE EN MAIN

Citation Bar
Sélectionnez « Configuration de l'enceinte », suivez les instructions à l'écran.

3 MONTAGE MURAL

- Étape 1:** Retirez les pieds en caoutchouc du dessous de l'enceinte.
- Étape 2:** Montez le support mural sur la paroi en utilisant les vis.
- Étape 3:** Faites passer le cordon secteur vers le haut par le support mural et branchez-le au connecteur d'alimentation.

- Étape 4:** Placez l'enceinte dans le support mural et vissez les vis fournies sur son dessous.
- Étape 5:** Utilisez l'écrou au bas de la fixation murale pour orienter l'enceinte puis serrez.

5 CARACTÉRISTIQUES TECHNIQUES

- Désignation du modèle: CITATION SURROUND
- Rapport signal/bruit: >80dB
- Réinitialiser: 2x50W RMS
- Alimentation: 100-240V ~ 50/60Hz
- Consommation d'énergie en mode veille: <2,0 watts
- Puissance de l'émetteur WISA 5G: <14dBm
- Modulation WISA 5G: OFDM, BPSK, QPSK, 16QAM
- Plage de fréquences de l'émetteur WISA 5G: 5.15GHz - 5.35GHz, 5.47-5.725 GHz, 5.725-5.825GHz
- Dimensions (anch. x h x p): 105 x 273 x 86mm (4" x 10.7" x 3.3")
- Poids: 1.29kg (2.84 lb)
- Dimensions de l'emballage (L x H x P): 235 x 383 x 150mm (10" x 15" x 6")
- Poids de l'emballage (brut): 3.57kg (7.87 lb)

Remarque: Ce produit est conçu pour être instantanément allumé et prêt à recevoir le signal de WISA Tx Unit à tout moment, la connexion sans fil doit rester active constamment pour assurer son bon fonctionnement. Le produit est conforme à la législation sur l'énergie de l'Union européenne. Le produit passe en mode sommeil (veille en réseau) après 20 minutes sans fonctionnement, après quoi il peut être réactivé via une connexion sans fil.

ES

1 COMPONENTES DEL PRODUCTO

- Citation Surround x2
- 2 soportes de montaje en pared
- 2 cables de alimentación regional (varía según el país)

Parte delantera

Parte posterior

Restablecer

Parte inferior

Conector de alimentación

Indicador de estado LED (para pareado)	Funcionamiento LED
Entrar en modo de pareado	● Parpadeante
Conexión inalámbrica con barra	● 10 s → ○ Apagado
Fuera de cobertura/pérdida de conexión inalámbrica	● Parpadeante

2 EMPEZAR

Citation Bar
Selecciona Speaker Setup (Ajustes del altavoz) y sigue las instrucciones de la pantalla.

3 MONTAJE EN LA PARED

- Paso 1:** Quite las patas de goma de la parte inferior del altavoz.
- Paso 2:** Monte el soporte mural en la pared con tornillos.
- Paso 3:** Haz pasar el cable hacia arriba a través del soporte mural y conéctalo al conector de alimentación.

- Paso 4:** Coloca el altavoz en el soporte mural con los tornillos suministrados en la parte inferior.
- Paso 5:** Utiliza el tornillo de la parte inferior del soporte mural para inclinar el altavoz y apriétalo.

5 ESPECIFICACIONES

- Nombre del modelo: CITATION SURROUND
- Relación señal/ruido: >80dB
- Potencia de salida: 2x50W RMS
- Alimentación eléctrica: 100-240V ~ 50/60Hz
- Consumo de energía en modo de reposo: <2,0 vatios
- Potencia del transmisor WISA 5G: <14dBm
- Modulación 5G WISA: OFDM, BPSK, QPSK, 16QAM
- Rango de frecuencia del transmisor WISA 5G: 5.15GHz - 5.35GHz, 5.47-5.725 GHz, 5.725-5.825GHz
- Dimensiones (anch. x alt. x prof.): 105 x 273 x 86mm (4" x 10.7" x 3.3")
- Peso: 1.29kg (2.84 lb)
- Dimensiones del embalaje (Anch. x Alt. x Prof.): 235 x 383 x 150mm (10" x 15" x 6")
- Peso del paquete (bruto): 3.57kg (7.87 lb)

Nota: Este producto está diseñado para encenderse y estar a punto para recibir la señal de WISA Tx Unit en un instante. La conexión inalámbrica debe permanecer activa en todo momento para garantizar un funcionamiento correcto. Este producto cumple con las normas de la Unión Europea sobre energía. El producto se pone en modo de reposo (espera en red) al cabo de 20 minutos sin funcionamiento, después de lo cual se puede reactivar por vía inalámbrica.

DE

1. PRODUKT-TOUR

Citation Surround x2
Halterung für Wandmontage x 2
Regionales Netzkabel x 2 (je nach Land unterschiedlich)

Frontteil

Rückteil

Zurücksetzen

Bodenteil

Stromanschluss

LED-Indikatorstatus (für Koppeln)	LED-Anzeige
In Pairing-Modus wechseln	● Blinken
Kabellos verbunden mit Citation Bar	● 10 Sek. → ○ Aus
Reichweite/Funkverbindung unterbrochen	● Blinken

2. GET STARTED

Citation Bar

"Wählen Sie „Lautsprecher-Einrichtung“ und befolgen Sie die Anweisungen auf dem Bildschirm."

4. WANDHALTERUNG

Schritt 1: Entfernen Sie die Gummifüße auf der Unterseite des Lautsprechers.

Schritt 2: Montieren Sie die Wandhalterung mit Schrauben an der Wand.

Schritt 3: Führen Sie das Netzkabel nach oben durch die Wandhalterung und schließen Sie es am Stromanschluss an.

IT

1. TOUR DEI PRODOTTI

Citation Surround x2

2 staffe di montaggio a parete

2 cavi di alimentazione locali (varia a seconda del paese)

Lato anteriore

Lato posteriore

Reset

In basso

Connettore alimentazione

Stato dell'indicatore LED (per abbinamento)	Comportamento LED
Entra in modalità abbinamento	● Lampeggiante
Connesso in wireless a Citation Bar	● 10 sec → ○ Spento
Fuori dalla portata / Connessione wireless persa	● Lampeggiante

2. COME INIZIARE

Citation Bar

Selezionare "Impostazione altoparlanti", Seguire le istruzioni visualizzate sullo schermo".

3. INSTALLAZIONE A PARETE

Passo 1: Rimuovere i piedini in gomma dalla parte inferiore del diffusore.

Passo 2: Montare il supporto da parete sul muro utilizzando delle viti.

Passo 3: Inserire il cavo di alimentazione dal basso verso l'alto attraverso il supporto a parete e collegarlo al connettore dell'alimentazione.

NL

1. PRODUCTTOUR

Citation Surround x2

Beugel voor wandmontage x 2

Regionale voedingskabel x 2 (verschilt per land)

Voor

Terrug

Resetten

Onder

Voedingsaansluiting

LED-indicatorstatus (voor pairing)	LED-gedrag
Ga naar pairingmodus	● Knippert
Draadloos verbonden met Citation Bar	● 10 sek → ○ Uit
Buiten bereik/draadloze verbinding verbroken	● Knippert

2. BEGINNEN

Citation Bar

Selecteer ""Luidsprekerinstelling"". Volg instructies op het scherm.

3. MUURBEVESTIGING

Step 1: Verwijder de rubberen voetjes van de onderkant van de luidspreker.

Step 2: Monteer de muurbeugel in de muur met schroeven.

Step 3: Voer het netsnoer omhoog door de muurbevestiging en sluit het aan op de voedingsaansluiting.

NO

1. PRODUKTOMVISNING

Citation Surround x2

Brakett for montering på vegg x 2

Regional strømlledning x 2 (varierer avhengig av land)

Front

Tilbake

Tilbakestill

Nederst

Strømkontakt

LED-indikatorstatus (for paring)	LED-indikasjon
Gå inn i paringsmodus	● Blinker
Trådløst koblet med Citation Bar	● 10 sek → ○ Av
Utenfor rekkevidde/tapt trådløs tilkobling	● Blinker

2. KOM I GANG

Citation Bar

Velg "Høytaleroppsett". Følg instruksjonene på skjermen.

3. VEGGMONTERING

Trinn 1: Fjern gummiføtterne fra bunnen på høyttaleren.

Trinn 2: Monter veggbraketten på veggen med skruene.

Trinn 3: Før strømkabelen oppover gjennom veggmonteringen, og koble til strømintaket.

SV

1. PRODUKT BESKRIVNING

Citation Surround x2

2 x fästen för väggmontering

2 x strömanslutningskablar för olika länder (varierar beroende på land)

Framsida

Tillbaka

Återställ

Undersida

Strömanslutning

Status för lysdiod (för ihopparning)	LED-funktioner
Gå in i ihopparningsläget	● Blinkar
Trådlöst ansluten till Citation Bar	● 10 sek → ○ Av
Utom räckhåll/förlorad trådlös anslutning	● Blinkar

2. KOM IGÅNG

Citation Bar

Välj "Högtalarkonfiguration", följ instruktionerna på skärmen.

3. VÄGGFÄSTE

Steg 1: Ta bort gummifötterna från underdelen av högtalaren.

Steg 2: Montera väggfästet på väggen med skruvna.

Steg 3: Dra strömkabeln upp genom väggfästet och anslut den till strömbrytaren.

Steg 4: Placera högtalaren i väggfästet med skruvarna på underdelen.

DA

1. Produktrundvisning

Citation Surround x2

2 x vægmonteringsbeslag

2 x regionale strømkabler (varierer afhængigt af land)

Front

Tilbage

Nulstil

Bund

Strømsstik

Lysdiodestatusindikator (til parring)	Lysdiodefunktioner
Vælg paringsstilstand	● Blinker
Trådløst forbundet med Citation Bar	● 10 sek. → ○ Slukket
Uden for rækkevidde/mistet trådløs forbindelse	● Blinker

2. KOM GODT I GANG

Citation Bar

Vælg "højtalerkonfiguration", og følg instruktionerne på skærmen.

3. VÆGMONTERING

Trin 1: Fjern gummifødderne fra den nederste del af højttaleren.

Trin 2: Monter vægbeslaget i væggen ved brug af skruerne.

Trin 3: Led strømledningen oplad og ind igennem vægbeslaget, og tilslut strømstykket.

JP

1. 製品紹介

Citation Surround x2

壁取り付けブラケット x 2

地域対応電源アダプター x 2 地域対応電源アダプター

戻る

前

リセット

下部

電源コネクタ

LEDインジケータの状態（ペアリング用）	LEDの動作
ペアリングモード作動	● 点滅
Citation Bar とワイヤレス接続	● 10秒 → ○ オフ
圏外／ワイヤレス接続解除	● 点滅

2. 始動

Citation Bar

「スピーカー設定」を選択し、画面上の指示に従います。

3. ウォールマウント

ステップ1: スピーカー底部 からゴム足を外します。

ステップ2: ねじを使って 壁に取り付け用金具を取り付けます。

ステップ3: ウォールマウントを通して電源コードを 上方向に渡し、電源コネクタに 接続します。

KO

1. 제품 살펴보기

Citation Surround x2

벽걸이용 브라켓 x 2

벽걸이용 전원 코드 x 2 (국가에 따라 다름)

전면

후면

재설정

하단

전원 커넥터

LED 표시 상태 (페어링용)	LED 동작
페어링 모드 진입	● 점멸
Citation Bar 와 무선 연결됨	● 10초 → ○ 꺼짐
범위 이탈/무선 연결 끊김	● 점멸

2. 시작하기

Citation Bar

"스피커 설정"을 선택하고 화면에 표시되는 지침을 따릅니다.

3. 벽걸이기

1단계: 스피커 하단에서 고무 받침돌을 제거합니다.

2단계: 나사를 사용하여 벽 설치용 브라켓을 벽에 설치합니다.

3단계: 전원 코드를 벽걸이 위쪽으로 밀어 넣어 전원 커넥터에 연결합니다.

4단계: 스피커를 벽걸이에 놓고 제공된 나사로 하단을 고정합니다.

ID

1. PERKENALAN PRODUK

Citation Surround x2

Braket Dinding x 2

Kabel daya regional x 2 (bervariasi sesuai dengan negara)

Depan

Atas

Atur ulang

Bawah

Konektor daya

Status indikator LED (untuk pemasangan)	Perilaku
Memasuki mode berpasangan	● Berkedip
Nirkabel terhubung dengan Bar Citation	● 1,9k detik → ○ Mati
Di luar jangkauan/Koneksi nirkabel hilang	● Berkedip

2. MEMULAI

Citation Bar

Pilih "Pengaturan Speaker", ikuti instruksi yang tertera pada layar.

3. DUDUKAN DINDING

Langkah 1: Lepaskan kaki karet dari bagian bawah speaker.

Langkah 2: Pasangkan braket dinding ke dinding menggunakan sekrup.

Langkah 3: Posisikan kabel daya ke atas melalui dudukan dinding dan sambungkan ke konektor daya.

Торговая марка	: harman/kardon
Назначение товара	: Активная акустическая система
Изготовитель	: Харман Интернешнл Индастриз Инкорпорейтед, США, 06901 Коннектикут, г.Стэмфорд, Атлантік Стрит 400, офис 1500
Страна происхождения	: Китай
Импортер в Россию	: ООО "ХАРМАН РУС СиАйЭс", Россия, 127018, г.Москва, ул. Двинцев, д.12, к 1
Гарантийный период	: 1 год
Информация о сервисных центрах	: www.harman.com/ru тел. +7-800-700-0467
Срок службы	: 5 лет
Товар сертифицирован	: EAC
Дата производства	: Дата изготовления устройства определяется по двум буквенным обозначениям из второй группы символов серийного номера изделия, следующих после разделительного знака «-». Кодировка соответствует порядку букв латинского алфавита, начиная с января 2010 года: 000000-MY0000000, где «M» - месця производства (A - январь, B - февраль, C - март и т.д.) и «Y» - год производства (A - 2010, B - 2011, C - 2012 и т.д.).

Schritt 4: Platzieren Sie den Lautsprecher in die Wandhalterung mit den mitgelieferten Schrauben auf der Unterseite.

Schritt 5: Verwenden Sie die Mutter an der Unterseite der Wandhalterung, um den Lautsprecher zu neigen und festzuziehen.

6. TECHNISCHE DATEN

- Modellbezeichnung: CITATION SURROUND
- Signal-Rauschabstand: > 80 dB
- Ausgangsleistung: 2x50W RMS
- Netzteil: 100-240V ~ 50/60Hz
- Leistungsaufnahme im Standby-Modus: < 2,0 Watt
- 5 GHz WISA-Übertragungsleistung: <14dBm
- 5 GHz WISA-Modulation: OFDM, BPSK, QPSK, 16QAM
- 5 GHz WISA-Frequenzbereich: 5.15GHz-5.35GHz, 5.47~5.725 GHz, 5.725~5.825GHz
- Abmessungen (B x H x T): 105 x 273 x 86mm (4" x 10.7" x 3.3")
- Gewicht: 1.29kg (2.84 lb)
- Abmessungen Verpackung (B x H x T): 235 x 383 x 150mm (10" x 15" x 6")
- Bruttogewicht mit Verpackung: 3.57kg (7.87 lb)

Hinweis: Dieses Produkt ist zur sofort eingeschaltet und bereit, sofort das Signal der WISA Tx -Einheit zu empfangen. Dazu muss die drahtlose Verbindung immer aktiv bleiben, um einen ordnungsgemäßen Betrieb zu gewährleisten. Das Produkt entspricht den gesetzlichen Energiebestimmungen der Europäischen Union. Das Gerät wechselt automatisch nach 20 Minuten ohne Betätigung in den Ruhezustand (Netzwerk-Betriebsbereitschaft). In diesem Zustand kann es über Bluetooth oder WLAN reaktiviert werden.

Passo 4: Posizionare il diffusore sul supporto da parete utilizzando le viti in dotazione sul fondo.

Passo 5: Utilizzare il dado nella parte inferiore della staffa da parete per angolare il diffusore, quindi stringere.

6. SPECIFICHE

- Nome modello: CITATION SURROUND
- Rapporto segnale-rumore: >80 dB
- Potenza d'uscita: 2x50W RMS
- Alimentazione: 100-240V ~ 50/60Hz
- Consumo energetico in modalità Sleep: <2.0Watts
- Potenza del trasmettitore WISA 5G: <14dBm
- Modulazione WISA 5G: OFDM, BPSK, QPSK, 16QAM
- Intervallo di frequenza del trasmettitore WISA 5G: 5.15GHz - 5.35GHz, 5.47~5.725 GHz, 5.725~5.825GHz
- Dimensioni (L x A x P): 105 x 273 x 86mm (4" x 10.7" x 3.3")
- Peso: 1.29kg (2.84 lb)
- Dimensioni della confezione (L x A x P): 235 x 383 x 150mm (10" x 15" x 6")
- Peso della confezione (lordo): 3.57kg (7.87 lb)

Nota: Questo prodotto è progettato per accendersi immediatamente ed essere pronto a ricevere il segnale dalle unità WISA Tx, la connessione wireless deve rimanere costantemente attiva per garantire il corretto funzionamento. Il prodotto è conforme con la legislazione dell'Unione Europea relativa all'energia. Il prodotto entra in modalità standby (standby di rete) dopo 20 minuti di inattività, dopo di che può essere riattivato via wireless.

Step 4: Plaats de luidspreker in de muurbeugel met de meegeleverde schroeven aan de onderkant.

Step 5: Gebruik de moer aan de onderkant van de muurbevestigingsbeugel om de luidspreker te richten en vast te zetten.

6. SPECIFICATIES

- Modelnaam: CITATION SURROUND
- Signaal-ruisverhouding: >80 dB
- Uitgangsvermogen: 2x50W RMS
- Voeding: 100-240V ~ 50/60Hz
- Stroomverbruik in slaapstand: <2,0 watt
- 5 G WISA-zendervermogen: <14dBm
- 5 G WISA-modulatie: OFDM, BPSK, QPSK, 16QAM
- Frequentiebereik WISA-zender 5 G: 5.15GHz - 5.35GHz, 5.47~5.725 GHz, 5.725~5.825GHz
- Afmetingen (B x H x D): 105 x 273 x 86mm (4" x 10.7" x 3.3")
- Gewicht: 1.29kg (2.84 lb)
- Afmeting verpakking (B x H x D): 235 x 383 x 150mm (10" x 15" x 6")
- Verpakkingsgewicht (bruto): 3.57kg (7.87 lb)

Opmerking: dit product is ontworpen om direct in te schakelen een klaar te zijn voor ontvangst van het signaal van de WISA Tx Unit. Een draadloze verbinding moet beschikbaar blijven om goede werking te garanderen. Het product voldoet aan de energie van Europese Unie wetgeving. Het schakelt na 20 minuten zonder bediening in de slaapmodus (middels een netwerk standby), waarna het via de draadloze verbinding opnieuw kan worden ingestchakeld.

Trinn 4: Plasser høytaleren i veggen monter med de medfølgende skruene på bunnen.
Trinn 5: Bruk mutteren på bunnen av vegg-monteringsbraketten til å vinkle høytaleren og stram til.

6. SPESIFIKASJONER

- Modellnavn: CITATION SURROUND
- Signal-til-støy-forhold: >80 dB
- Urgangseffekt: 2x50W RMS
- Strømforsyning: 100-240V ~ 50/60Hz
- Strømförbruk i hvilemodus: <2,0 Watt
- 5G WISA-sendestyrke: <14dBm
- 5G WISA-modulasjon: OFDM, BPSK, QPSK, 16QAM
- 5G WISA-senderfrekvensområde: 5.15GHz - 5.35GHz, 5.47~5.725 GHz, 5.725~5.825GHz
- Dimensjoner (B x H x D): 105 x 273 x 86mm (4" x 10.7" x 3.3")
- Vekt: 1.29kg (2.84 lb)
- Emballasje dimensjoner (B x H x D): 235 x 383 x 150mm (10" x 15" x 6")
- Emballasjevekt (brutto): 3.57kg (7.87 lb)

Merkt: Dette produktet er utviklet til å være øyeblikkelig på og klar til å motta signal fra WISA Tx -enhet på et øyeblikks varsel, trådløs tilkobling må være aktiv til alle tider for å sikre korrekt drift.

Produktet overholder EU's energi-bestemmelser. Produktet vil gå i dvalemodus (nettverks-standby) etter 20 minutter uten drift, hvorpå det kan reaktiveres trådløst.

Steg 5: Använd muttern på underdelen av väggfästet för att vinkla samt spänna åt.

6. SPECIFIKATIONER

- Modellbeteckning: CITATION SURROUND
- Signal/brus-förhållande: >80 dB
- Uteffekt: 2x50W RMS
- Strömförsörjning: 100-240V ~ 50/60Hz
- Strömförbrukning i viloläge: <2,0 Watt
- 5G WISA sändareffekt: <14dBm