

ESOTERIC

High-End Audio Components 2024



Revolution Begins.

In the dead silence of the “Esoteric MagneDrive System” you will hear the sounds of a revolution taking place, making history for vinyl playback.



Grandioso T1

Analog Turntable

The Grandioso T1 is the first-ever analog turntable celebrating its 35th anniversary, accommodating a patent-registered unique contact-free drive mechanism, the “Esoteric MagneDrive System”, that inductively synchronizes the rotations of a magnetic driver and platter, realizing a quiet and silky-smooth rotation at an extraordinarily accurate rotation speed.



Grandioso S1X

Stereo Power Amplifier

Intricate and dynamic. A New Milestone in Class-A Stereo Power Amplifiers All of where the music is opened up and depicted fully – Grandioso S1X.



Grandioso C1X solo

Lineage Preamplifier

All sounds naturally come to life and resound on a boundless background of silence. A gem of preamplifier created by the wisdom of ESOTERIC.

The flagship model named "Grandioso"

Our goal was to push the outer limits of what audio components can be. We arrived at the ideal manifestation of audio engineering. For those searching for a profound experience of sound and music, this is a masterpiece that knows no compromise or equal. The culmination of all ESOTERIC's knowledge and skill is distilled within this, the new summit of our expertise. There is a musical term that celebrates the majestic: Grandioso*.

* Grandioso (music): Grand or noble.



Grandioso C1X Linestage Preamplifier

An all new preamplifier employing ultra precise attenuator and integrated discrete amplifier modules that define new horizon of ESOTERIC amplifiers for new era.



Grandioso M1X Monoblock Amplifier

Faithfully reproduce the dynamics of music. A monaural power amplifier gifted with a driving force that deserves for the flagship model.



“Grandioso” – supremacy in audio engineering.

Grandioso P1X SE Super Audio CD Transport

Accommodating a newly developed drive mechanism the “VRDS-ATLAS”, an ESOTERIC ultimate Super Audio CD transport.



Grandioso D1X SE Monoblock D/A Converter

Equipped with the “Master Sound Discrete DAC”, an ESOTERIC’s completely original design. The ultimate D/A converter with a monaural structure.



Sold in stereo configuration as shown.



Grandioso K1X SE Super Audio CD Player

The VRDS-ATLAS, and Master Sound Discrete DAC. Now, fruited to an integrated Super Audio CD player in the name of Grandioso.



Grandioso PS1 External Power Supply

A dedicated external reinforced power supply unit that further enhances the music playback potential of the Grandioso K1X.

* Modification is required on the K1X at the authorized service centre.



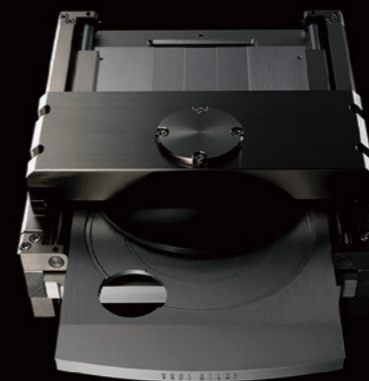
Grandioso G1X Master Clock Generator

A reference model for the master clock generator that employs all-new Master Sound Discrete Clock developed by ESOTERIC.

TWO REVOLUTIONS

Master Sound Discrete DAC

Unattainable by integrated chips, our goal was to assemble carefully selected and tested discrete components into a complete circuit that could perfectly reproduce all the dynamics and energy of music. Our top engineering teams put their pride on the line to design and produce a quality of sound that can only be found in the Master Sound Discrete DAC discrete D/A converter.



VRDS ATLAS

The Greek god Atlas held the skies on his shoulders as he stood at the centre of the heavens. This peerless new Esoteric system has been designed from the ground up to showcase a unique innovation; a completely new VRDS-ATLAS transport.



Super Audio CD Players



K-01XD SE Super Audio CD/CD Player

Finally, the K-01 series sublimates with a new VRDS “ATLAS 01” mechanism inherited from Grandioso, and full in-house designed “Master Sound Discrete DAC”.



K-03XD SE Super Audio CD/CD Player

Eventually, the K-03 series acquires a new master VRDS “ATLAS 03” mechanism with a high degree of perfection, and full in-house designed “Master Sound Discrete DAC”.



Network Players/DAC



N-01XD SE Network DAC

A network transport unit that embodies the concept of separate components which is an invincible philosophy of ESOTERIC.



N-03T Network Audio Transport

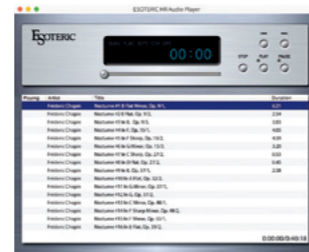
Now supports ESOTERIC’s original digital transmission standard “ES-LINK”. Network audio player x DAC with rich DAC functions.



K-05XD Super Audio CD/CD Player

A new VRD-ATLAS “ATLAS 05” transport mechanism, “Master Sound Discrete” DAC and “Master Sound Discrete Clock for Digital Player” make this new K-05XD a worthy successor in the most successful ‘05’ product range.

Music App



ESOTERIC HR Audio Player

Music Player Application (Complimentary)

A music playback application exclusively designed for ESOTERIC Super Audio CD Player/DAC/Network Player that employs USB Audio input. This free app is compatible with Windows and Mac for high-resolution audio formats such as DSD and PCM, without a complicated setup.



N-05XD Network DAC / Preamplifier

Reproducing the full sound quality of the original masters. The N-05XD represents a new frontier in network DAC/preamps that matches with ESOTERIC power amplifiers.



Music App for N Series



Album artwork courtesy of onkyo music © WARNER MUSIC JAPAN

ESOTERIC Sound Stream

Network Audio Application (Complimentary)

An iOS/Android application for tablets and smartphones including iPad designed with an emphasis on both sound quality and network playback operating ease.

Supported products: N-01XD, N-03T, N-05XD



Integrated Amplifier



F-01 Class-A Integrated Amplifier

The “finest” class-A integrated amplifier incorporating Grandioso “X” Edition amp technologies delivers 30 watts + 30 watts at 8 ohms.



F-02 Integrated Amplifier

The “finest” integrated amplifier incorporating Grandioso “X” Edition amp technologies delivers 120 watts + 120 watts at 8 ohms.

Power Amplifiers



S-02 Stereo Power Amplifier

With overwhelming amounts of material, including powerful power supply section. A stereo power amplifier that inherits the idea of Grandioso.



S-05 Stereo Power Amplifier

The new S-05 – a class-A power amplifier thoroughly focused on delivering all of music’s unique tonal qualities from a more compact stereo configuration, embracing the philosophy of the Grandioso MIX: “minimal circuitry – maximum output”.

Phonostage Amplifier



E-02 Balanced Phonostage Amplifier

This MC/MM-compatible phono amplifier is an apex of vinyl playback. Especially, providing fully balanced transmission and amplification on all MC cartridges.

External Power Supply



PS-01F External Power Supply for F-01/F-02

Improving the sound quality of the F-01/F-02 integrated amplifier by implementing the same power supply design philosophy as the Grandioso C1X preamplifier.

Master Clock Generator



G-01XD Master Clock Generator

The G-01XD brings out the full music playback potential of the Esoteric K-01/N-01 series, as well as various digital players that can be connected to a 10 MHz external clock.



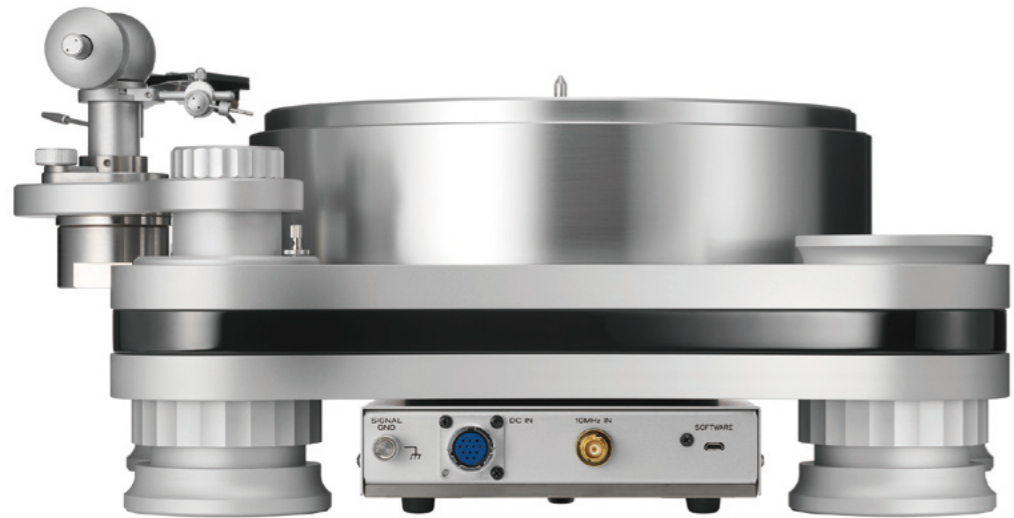
G-05 Master Clock Generator

The G-05 is equipped with a in-house designed “Master Sound Discrete Clock”, a clock module that takes the musical expression of digital sources one step further.

Analog Turntable

Grandioso T1

| | |
|--|---|
| Rotation speed | 33 1/3 rpm, 45 rpm |
| Rotation speed adjustment range | ±12% (in 0.1% increments) |
| Wow and flutters | 0.06 % or less (W.R.M.S) |
| Clock Input Connector | BNC |
| Clock Input impedance | 50 Ω |
| Clock Input frequency | 10 MHz |
| Clock Input level | 0.5 to 1.0 Vrms (sine wave) |
| Power consumption | 9 W |
| Overall Dimensions Base Unit (W x H x D) | 497 x 215 x 436 mm (19 5/8" x 8 1/2" x 17 1/4") |
| Overall Dimensions Platter (W x H x D) | Ø315.4 x 103 mm (12 1/2" x 4 1/8") |
| Overall Dimensions Motor Unit (W x H x D) | 180 x 137 x 450 mm (7 1/8" x 5 1/2" x 17 3/4") |
| Overall Dimensions Power Supply Unit (W x H x D) | 445 x 162 x 447 mm (17 5/8" x 6 1/2" x 17 5/8") |
| Total Weight | 65 kg (143 7/8 lb) |



Super Audio CD Transport

Grandioso P1X SE

| | |
|----------------------------|---|
| DAC | - |
| Digital Audio Inputs | - |
| Digital Audio Outputs | ES-LINK5 x 1 XLR x 2 RCA x 1 |
| Analog Audio Outputs | - |
| Clock Input | BNC x 1 |
| Clock Output | - |
| Overall Dimensions (WxHxD) | 445 x 162 x 449mm / 17-5/8" x 6-1/2" x 17-3/4" (main unit) 445 x 132 x 452mm / 17-5/8" x 5-1/4" x 17-7/8" (power supply) |
| Weight | 29kg / 64 lbs. (main unit), 24kg / 53 lbs. (power supply) |



Super Audio CD Player

Grandioso K1X SE

| | |
|-----------------------|--|
| DAC | Master Sound Discrete DAC |
| Analog Audio Outputs | XLR / ES-LINK Analog x 1 pair RCA x 1 pair |
| Digital Audio Outputs | XLR x 1 RCA x 1 |
| Digital Audio Inputs | RCA x 1 Optical x 1 USB B x 1 |
| Clock In | BNC x 1 |
| Frequency Response | 5Hz to 75kHz |
| S/N Ratio | 113dB |
| THD | 0.0007% |
| Overall Dimensions | 445 x 162 x 447mm / 17-5/8" x 6-1/2" x 17-5/8" |
| Weight | 35kg / 77-1/4 lbs. |



K-01XD SE

| | |
|-----------------------|--|
| DAC | Master Sound Discrete DAC |
| Analog Audio Outputs | XLR / ES-LINK Analog x 1 pair RCA x 1 pair |
| Digital Audio Outputs | XLR x 1 RCA x 1 |
| Digital Audio Inputs | RCA x 1 Optical x 1 USB B x 1 |
| Clock In | BNC x 1 |
| Frequency Response | 5Hz to 70kHz |
| S/N Ratio | 113dB |
| THD | 0.0007% |
| Overall Dimensions | 445 x 162 x 438mm / 17-5/8" x 6-1/2" x 17-1/4" |
| Weight | 31kg / 68-3/8 lbs. |



K-03XD SE

| | |
|-----------------------|--|
| DAC | Master Sound Discrete DAC |
| Analog Audio Outputs | XLR / ES-LINK Analog x 1 pair RCA x 1 pair |
| Digital Audio Outputs | XLR x 1 RCA x 1 |
| Digital Audio Inputs | RCA x 1 Optical x 1 USB B x 1 |
| Clock In | BNC x 1 |
| Frequency Response | 5Hz to 70kHz |
| S/N Ratio | 113dB |
| THD | 0.0007% |
| Overall Dimensions | 445 x 162 x 438mm / 17-5/8" x 6-1/2" x 17-1/4" |
| Weight | 28kg / 61-3/4 lbs. |



D/A Converter

Grandioso D1X SE

| | |
|----------------------------|--|
| DAC | Master Sound Discrete DAC |
| Digital Audio Inputs | ES-LINK5 x 2 XLR x 1 RCA x 2 Optical x 1 USB B x 1 |
| Analog Audio Inputs | - |
| Digital Audio Outputs | - |
| Analog Audio Outputs | XLR/ES-LINK Analog x 1 (mono) RCA x 1 (mono) |
| Headphone Outputs | - |
| USB Port for USB Drive | - |
| Clock In | BNC x 1 |
| Clock Out | - |
| Overall Dimensions (WxHxD) | 445 x 132 x 448mm / 17-5/8" x 5-1/4" x 17-3/4" |
| Weight | 23.1kg / 51 lbs. (left unit), 23kg / 50-3/4 lbs. (right unit) |



Network DAC

N-01XD SE

| | |
|----------------------------|--|
| DAC | Master Sound Discrete DAC |
| Digital Audio Inputs | ES-LINK5 x 1 XLR x 1 RCA x 2 Optical x 1 USB B x 1 |
| Analog Audio Inputs | - |
| Digital Audio Outputs | - |
| Analog Audio Outputs | XLR / ES-LINK Analog x 1 pair RCA x 1 pair |
| Headphone Outputs | - |
| USB Port for USB Drive | USB A x 2 |
| Clock In | BNC x 1 |
| Clock Out | BNC x 1 |
| Overall Dimensions (WxHxD) | 445 x 162 x 438mm / 17-5/8" x 6-1/2" x 17-1/4" |
| Weight | 26.3kg / 58 lbs. |



Network Transport

N-03T

| | |
|----------------------------|--|
| DAC | - |
| Digital Audio Inputs | - |
| Analog Audio Inputs | - |
| Digital Audio Outputs | XLR x 1 RCA x 1 USB A x 1 |
| Analog Audio Outputs | - |
| Headphone Outputs | - |
| USB Port for USB Drive | USB A x 2 |
| Clock In | BNC x 1 |
| Clock Out | - |
| Overall Dimensions (WxHxD) | 445 x 131 x 360mm / 17-5/8" x 5-1/4" x 14-1/4" |
| Weight | 17kg / 37-1/2 lbs. |



Network DAC / Preamplifier

N-05XD

| | |
|----------------------------|--|
| DAC | Master Sound Discrete DAC |
| Digital Audio Inputs | XLR x 1 RCA x 2 Optical x 2 USB B x 1 Bluetooth® x 1 |
| Analog Audio Inputs | XLR x 1 pair RCA x 1 pair |
| Digital Audio Outputs | XLR x 1 RCA x 1 |
| Analog Audio Outputs | XLR/ES-LINK Analog x 1 pair ES-LINK Analog Pre-Out x 1 pair RCA x 1 pair |
| Headphone Outputs | 4-pin XLR x 1 (Balanced) 6.3mm Standard Phone x 1 (Unbalanced) |
| USB Port for USB Drive | USB A x 2 |
| Clock In | BNC x 1 |
| Clock Out | - |
| Overall Dimensions (WxHxD) | 445 x 131 x 377mm / 17-5/8" x 5-1/4" x 14-7/8" |
| Weight | 13.8kg / 30-1/2 lbs. |



Super Audio CD Player

K-05XD

| | |
|----------------------------|---|
| DAC | Master Sound Discrete DAC |
| Digital Audio Inputs | USB x 1 RCA x 1 Optical x 1 |
| Analog Audio Inputs | - |
| Digital Audio Outputs | RCA x 1 Optical x 1 USB x 1 |
| Analog Audio Outputs | XLR/ES-Link analog x 1 pair RCA x 1 pair |
| Headphone Outputs | - |
| USB Port for USB Drive | - |
| Clock In | 10 MHz BNC x 1 |
| Clock Out | - |
| Overall Dimensions (WxHxD) | 445 x 162 x 357mm |
| Weight | 20.7kg |



Linestage Preamplifier

| | Grandioso C1X | Grandioso C1X Solo |
|----------------------------|---|---|
| Analog Audio Inputs | XLR/ES-LINK Analog x 3 pairs RCA x 2 pairs | XLR / ES-LINK Analog x 3 pairs RCA x 2 pairs |
| Phono Input | - | - |
| Analog Audio Outputs | ES-LINK Analog x 2 pairs XLR x 2 pairs | ES-LINK Analog x 2 pairs XLR x 2 pairs |
| Frequency Response | 1Hz to 150kHz (-3dB) | 1Hz to 150kHz (-3dB) |
| S/N Ratio | 120dB (2V input, A-weight) | 120dB (2V input, A-weight) |
| THD | 0.00035% (XLR Input, XLR Output) | 0.00035% (XLR Input, XLR Output) |
| Power Consumption | 22watts | 22watts |
| Overall Dimensions (WxHxD) | 445 x 132 x 449mm / 17-5/8" x 5-1/4" x 17-5/8" (main unit) 445 x 132 x 452mm / 17-5/8" x 5-1/4" x 17-3/4" (power unit) | 445 x 132 x 449 mm (17 5/8" x 5 1/4" x 17 3/4") |
| Weight | 20.2kg / 44.6 lbs. (main unit), 29kg / 64 lbs. (power unit) | 27.5 kg (60 3/4 lb) |



Integrated Amplifier

| | F-01 | F-02 |
|---------------------------------|---|---|
| Output Power | 30W + 30W (8Ω, Class A) 60W + 60W (4Ω) | 120W + 120W (8Ω) 240W + 240W (4Ω) |
| Type of Amplifier | Class A | |
| Maximum Compatible Impedance | 4Ω | 4Ω |
| Speaker Terminals | Screw type x 1 set | Screw type x 1 set |
| Analog Audio Inputs | ES-Link Analog / XLR x 3 pairs RCA x 3 pairs PHONO x 1 pair (MC/MM) | ES-Link Analog / XLR x 3 pairs RCA x 3 pairs PHONO x 1 pair (MC/MM) |
| Pre-Out | ES-Link Analog x 1 pair XLR x 1 pair | ES-Link Analog x 1 pair XLR x 1 pair |
| Expansion Slot for Option Board | x 1 | x 1 |
| Frequency Response | 10Hz to 100kHz (+0dB, -3dB, 1W output) | 10Hz to 100kHz (+0dB, -3dB, 1W output) |
| S/N Ratio | 104dB (IHF-A) | 110dB (IHF-A) |
| THD | 0.008% (30W) | 0.008% (30W) |
| Power Consumption | 250 watts | 280 watts |
| Overall Dimensions (WxHxD) | 445 x 191 x 471mm / 17-5/8" x 7-5/8" x 18-1/2" | 445 x 191 x 471mm / 17-5/8" x 7-5/8" x 18-1/2" |
| Weight | 32.2kg / 71-1/8 lbs. | 32.4kg / 71-1/2 lbs. |



Power Amplifier

| | Grandioso M1X | Grandioso S1X | S-02 | S-05 |
|----------------------------|---|---|---|--|
| Rated Output Power | 300W (8Ω) 600W (4Ω) | 50W + 50W (8Ω Class-A) 100W + 100W (4Ω Class-A) | 145W + 145W (8Ω) 290W + 290W (4Ω) | 30W + 30W (8Ω, Class-A) 60W + 60W (4Ω) 120W (BTL mode, 8Ω) |
| Maximum Output Power | 1200W (2Ω) | 200W + 200W (2Ω) | 580W + 580W (2Ω) | T.b.c. |
| Analog Audio Inputs | ES-LINK Analog x 1 XLR x 1 RCA x 1 | ES-LINK Analog x 1 pair XLR x 1 pair RCA x 1 pair | XLR x 1 pair RCA x 1 pair | XLR ESL-A x 1 Pair XLR x 1 Pair RCA x 1 Pair |
| Frequency Response | 5Hz to 100kHz (+0dB, -3dB, 6Ω) | 5Hz to 100kHz (+0dB, -3dB, 8Ω) | 5Hz to 100kHz (+0dB, -3dB, 8Ω) | 5Hz to 100kHz (+0dB, -3dB, 8Ω) |
| S/N Ratio | 119dB (IHF-A) | 109dB (IHF-A, XLR) | 115 dB (IHF-A) | 102dB (IHF-A, XLR) |
| THD | 0.006% (1kHz, 8Ω, 300W) | 0.006% (1kHz, 8Ω, 50W) | 0.003% (1kHz, 8Ω, 150W) | 0.007% (1kHz, 8Ω, 30W) |
| Damping Factor | - | - | 1000 | T.b.c. |
| Power Consumption | UK/Europe model 400 watts (no signal: 55watts) US/Canada model 400 watts (no signal: 55watts) Korea model - | 330W (270W at no signal) | 440 watts (no signal: 160watts) 440 watts (no signal: 160watts) 440 watts (no signal: 160watts) | 245W (210W at no signal) |
| Overall Dimensions (WxHxD) | 491 x 221.5 x 535mm / 19-3/8" x 8-3/4" x 21-1/8" | 491 x 221 x 536 mm (19 3/8" x 8 3/4" x 21 1/8" Including Protrusions | 445 x 221.5 x 489.6mm / 17-7/8" x 8-3/4" x 19-3/8" | 445 x 191 x 444mm |
| Weight | 491 x 221.5 x 535mm / 19-3/8" x 8-3/4" x 21-1/8" | 48 kg (105-7/8 lb) | 48kg / 105-7/8 lbs. | 30.7kg |



Master Clock Generator

| | Grandioso G1X | G-01XD | G-05 |
|--------------------------------|--|--|--|
| Clock Type | Master Sound Discrete Clock SC1 | Master Sound Discrete Clock SC1 | Master Sound Discrete Clock SXT-03 |
| Frequency Stability | - | - | - |
| Frequency Precision | within ± 0.01 ppm | within ± 0.01 ppm | within ± 0.01 ppm |
| Warm-up Time | 10min. | 10min. | 10min. |
| Clock Out | BNC x 5 | BNC x 4 | BNC x 4 |
| Output Frequency | 10MHz | 10MHz | 10MHz |
| Ext In | - | - | - |
| Input Frequency | - | - | - |
| Overall Dimensions (W x H x D) | 445 x 132 x 448mm / 17-5/8" x 5-1/4" x 17-3/4" | 445 x 131 x 360mm / 17-5/8" x 5-1/4" x 14-1/4" | 380 x 128 x 350mm / 15" x 5-1/8" x 13-7/8" |
| Weight | 23kg / 52-3/4 lbs. | 12.8kg / 28-1/4 lbs. | 10kg / 22-1/8 lbs. |



Balanced Phonostage Amplifier

| | E-02 |
|--------------------------------|---|
| Phono Inputs | XLR x 1 pair (exclusive for MC) RCA x 2 pairs (MM/MC) |
| Analog Audio Outputs | XLR / ES-LINK Analog x 1 pair RCA x 1 pair |
| RIAA Deviation | ± 0.2 dB (10Hz - 20kHz) |
| S/N Ratio | MC: 80dB (Input short, rated output, IHF-A) MM: 100dB (Input short, rated output, IHF-A) |
| THD | 0.007% (1kHz, MM, rated output) |
| Gain | MC: 72dB (XLR), 66dB (RCA) MM: 46dB (XLR), 40dB (RCA) |
| Channel Separation | 96dB (MM, 10kHz) |
| Sub-sonic Filter | 17Hz, -6dB/octave |
| Overall Dimensions (W x H x D) | 445 x 131 x 377mm / 17-5/8" x 5-1/4" x 14-1/4" |
| Weight | 12.5kg / 27-5/8 lbs. |



Power Supply Unit

| | Grandioso PS1 | PS-01F |
|--------------------------------|--|---|
| Corresponding Model | Grandioso K1X / Grandioso K1* | F-01 / F-02 |
| Power Consumption | 17 watts | 10 watts |
| Overall Dimensions (W x H x D) | 445 x 132 x 452mm / 17-5/8" x 5-1/4" x 17-7/8" | 146 x 128 x 353mm / 5-3/4" x 5-1/8" x 13-7/8" |
| Weight | 23.7kg / 52-3/8 lbs. | 7kg / 15-1/2 lbs. |

* Requires the VUK-K1PS1



Option Board

| | OP-ESLA1 |
|-----------------------|---------------------------------------|
| ES-LINK Analog Inputs | XLR x 1 pair |
| Supported Models | Grandioso F1 F-03A F-05 F-07 |

The OP-ESLA1 is an optional board that adds the "ES-LINK Analog" inputs to the ESOTERIC integrated amplifiers.



ESOTERIC

- These products are available in two different power supply variations. Make sure that the voltage shown on the rear panel matches the AC line voltage in your area.
- The shape of the AC inlet and plug of the supplied power cord depends on the voltage rating and destination country.

©2024 TEAC Corporation. All Rights Reserved. All text, images, graphics and other materials on this brochure are subject to the copyright and other intellectual property rights of TEAC Corporation. These materials shall not directly or indirectly be published, reproduced, modified or distributed in any medium. Esoteric, and Grandioso are trademarks of TEAC Corporation, registered in the U.S. and other countries. All other brand or product names are trademarks or registered trademarks of their respective holders.

TEAC Corporation

1-47, Ochiai, Tama-shi, Tokyo Japan 206-8530

Esoteric Brand Website ▶
<https://www.esoteric.jp/en>



Authorized Dealer